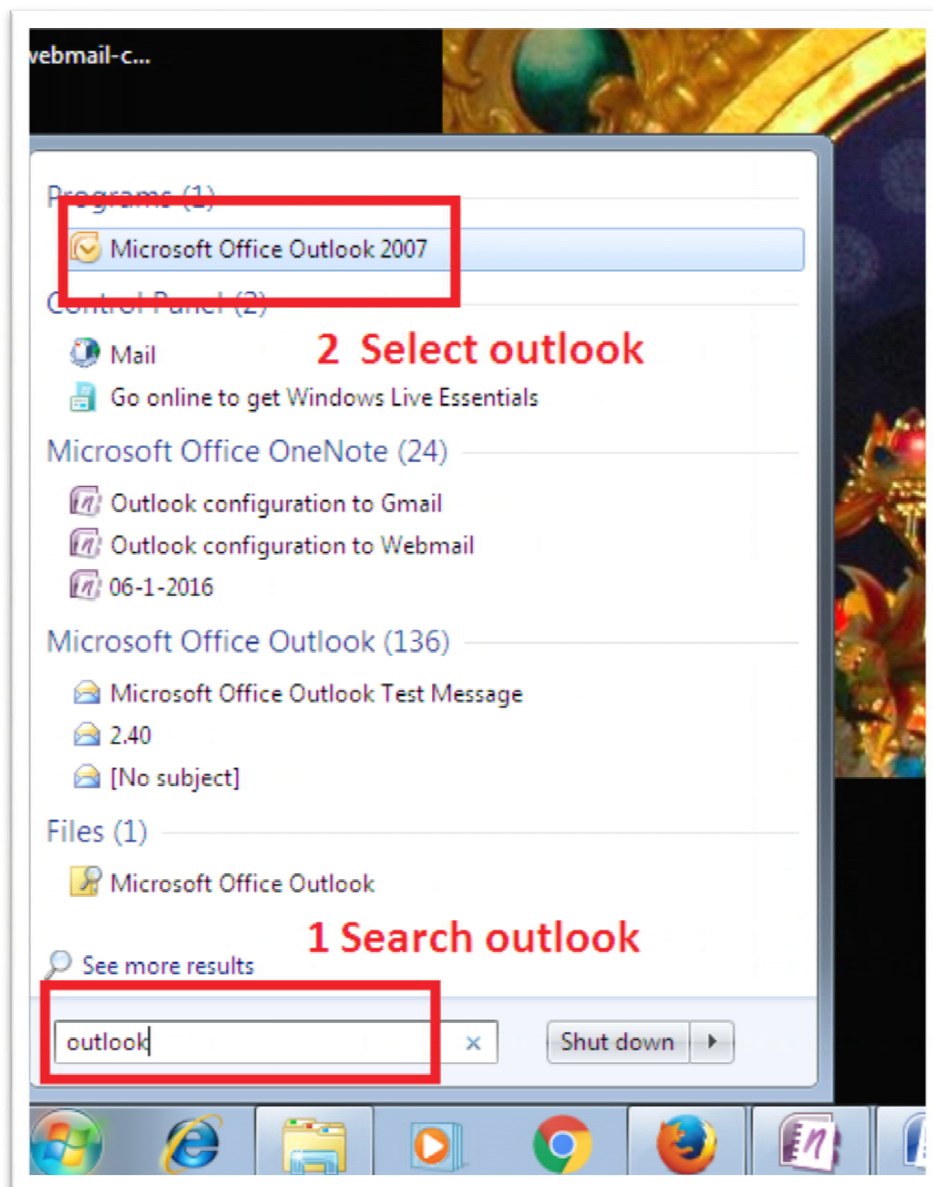


Outlook 2007 Configuration for your Webmail account

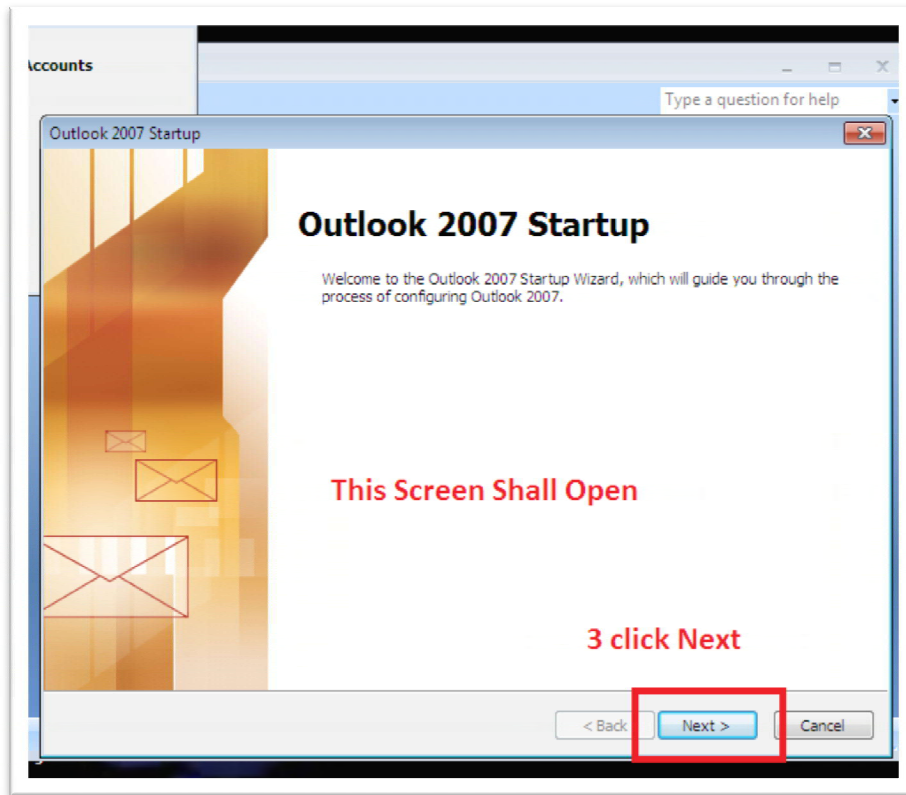
Minimum requirement

- Webmail account and password
- Outlook setup install on your Computer
- Incoming and outgoing server name

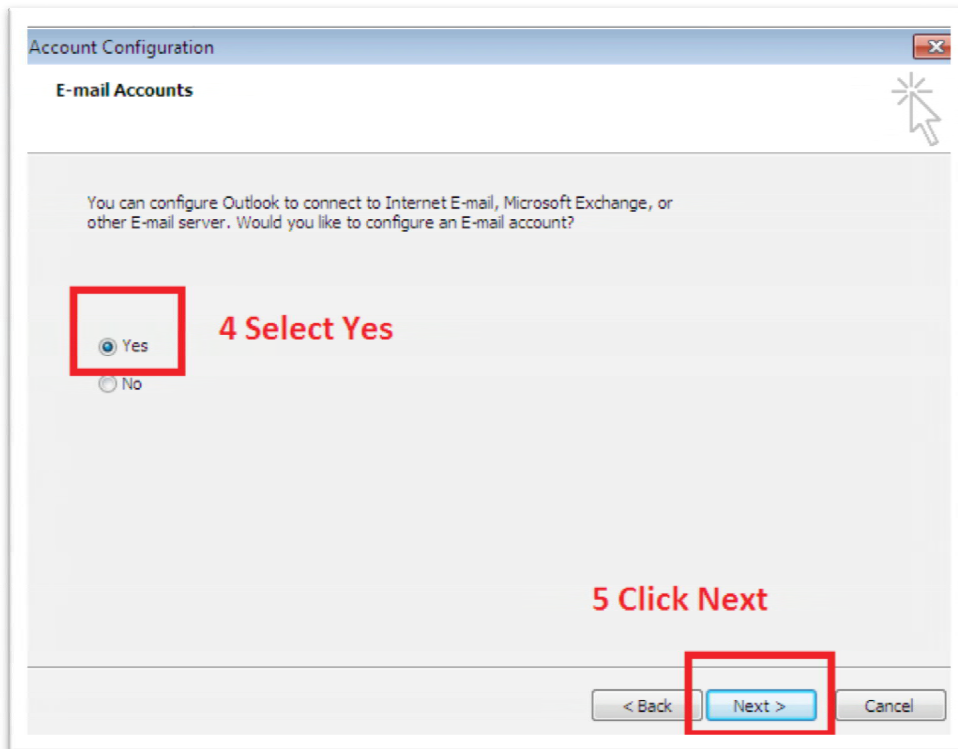
1) Search outlook in you pc and open it



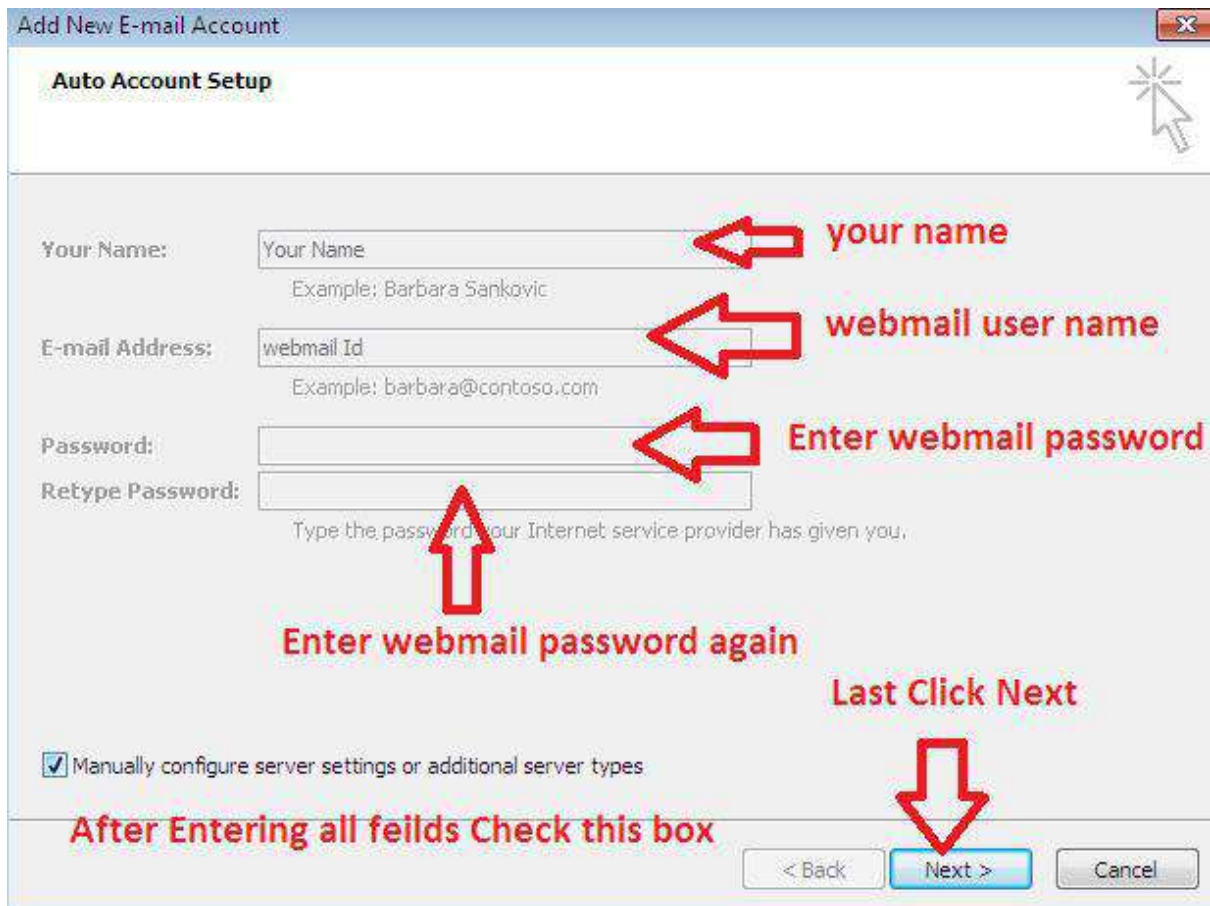
2) Now Click Next



3) Select "yes" and click next



4) Below mention from shall display now enter your information



Click **Next**. If you are configuring Outlook 2007 automatically, you're done! Just click **Finish**.

If you are configuring Outlook 2007 manually, select **Internet E-mail** and click **Next**.

1. Verify your **User Information**, and enter the following additional information:

Server Information

Account Type: POP3

Get incoming & outgoing mail Server name from Your Service Provider

Many a times it is mail.yourdomainname

Ex : mail.lansinfosystem.com

Outgoing mail server (SMTP): mail.dominname

Incoming mail server (SMTP): mail.dominname

Logon Information

User Name: Enter your webmail username

Password: Enter your webmail password.

Require logon using Secure Password Authentication (SPA): Leave this option unchecked.

5) Enter all your Details

Change E-mail Account

Internet E-mail Settings
Each of these settings are required to get your e-mail account working.

User Information
Your Name:
E-mail Address:

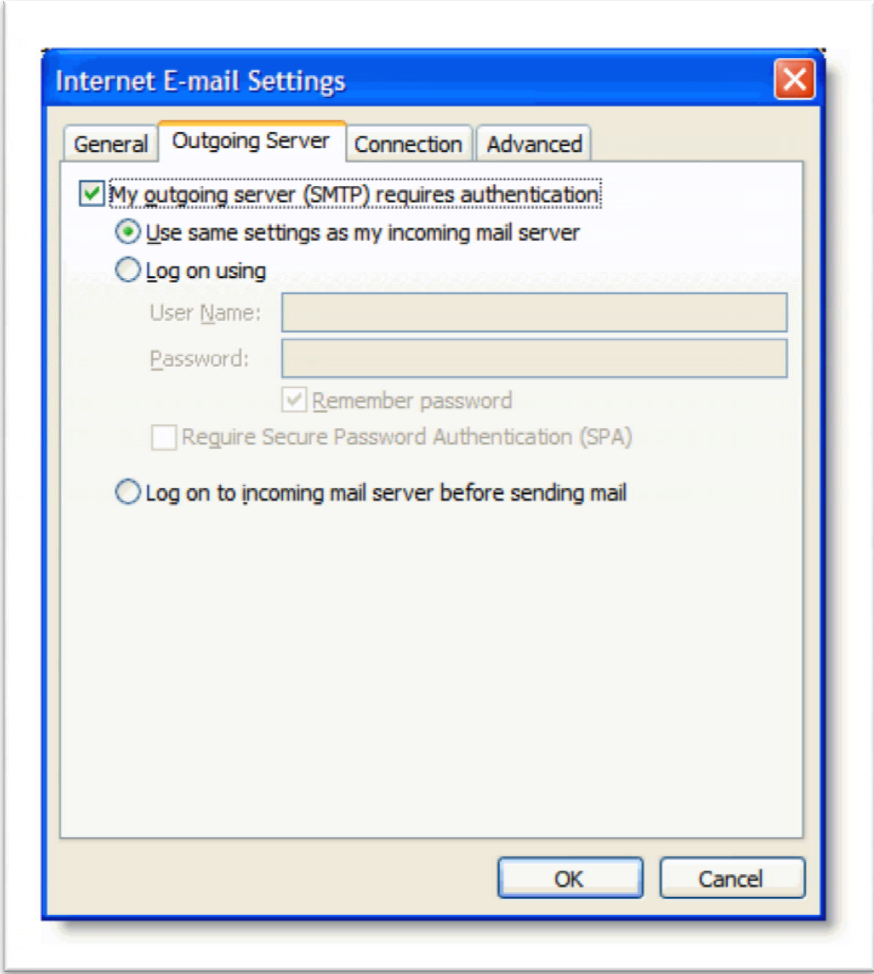
Server Information
Account Type:
Incoming mail server:
Outgoing mail server (SMTP):

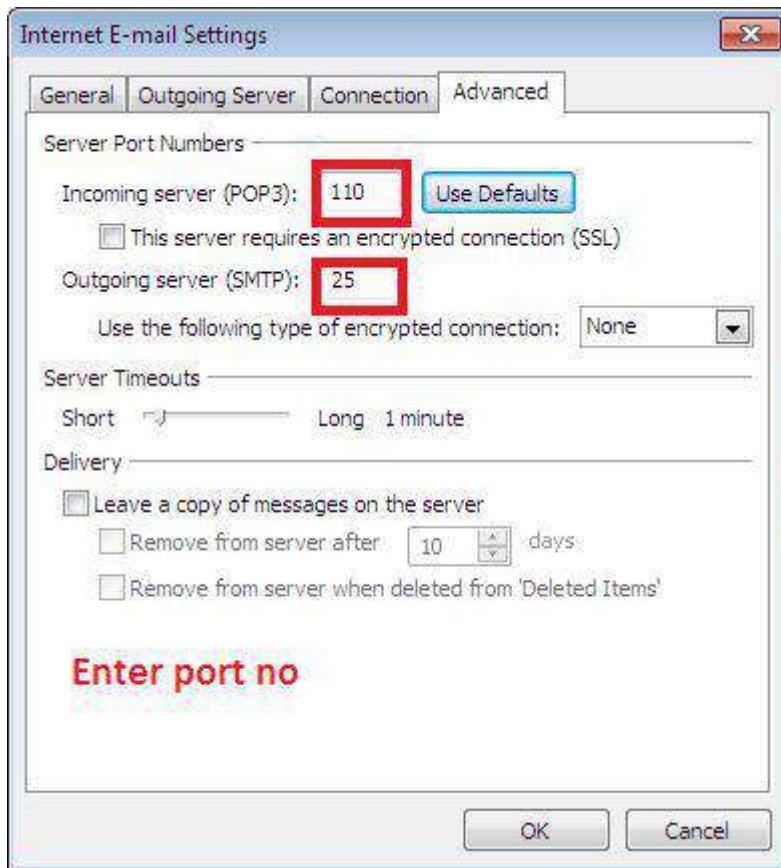
Logon Information
User Name:
Password:
 Remember password
 Require logon using Secure Password Authentication (SPA)

Test Account Settings
After filling out the information on this screen, we recommend you test your account by clicking the button below. (Requires network connection)

After filling all Details
Click more
Setting

1. Click the **More Settings...** button, and select the **Outgoing Server** tab.
2. Check the box next to **My outgoing server (SMTP) requires authentication** and select **Use same settings as my incoming mail server**.





1. Click **OK**.
2. Click **Test Account Settings...** After receiving 'Congratulations! All tests completed successfully', click **Close**.
3. Click **Next**, and then click **Finish**.

Congratulations! You're done configuring your client to send and retrieve Gmail messages.